

A HOUSE IS NOT JUST A HOUSE

unique
innovative
sustainable



foto: "nixki / Shutterstock.com"

A HOUSE MADE OUT OF SEDIMENT, PIE IN THE SKY?

Sediment has proven its worth in civil engineering. Construction elements made out of sediment is a patented product by NETICS. A new application is that it can be used for residential construction. Locally dredged sediment gets filtered, processed and compressed into bricks. Innovative, environmentally friendly and sustainable.



WHAT DO MODERN BUYERS WANT?

Modern buyers want to be involved in the design process and make their own decisions in order to distinguish themselves. They are looking for a combination of beauty, quality and functionality. These modern buyers are willing to invest in a sustainable solution if this results in a return on investment in the form of a lower utility bill or an increase in value of the house. EGM architecten designed a unique way of living that responds to buyers demands.



HOUSE

MADE OUT OF

SEDIMENT

DISTINCTIVE ENERGY NEUTRAL



SUSTAINABLE BUILDING

The sediment gets processed locally. Not only does this result in lower transportation costs, but it also indirectly reduces water management. The other elements of this conceptual façade are also made out of sustainable bio based, bio ecological and Cradle to Cradle materials.

ENERGY NEUTRAL HOUSES

Not only do we design for the present, we always keep an eye on the future. That is the reason why we made this concept energy neutral. It combines an environmentally friendly building method by using sustainable materials. Green roofs generate electricity and take care of water buffering. Optimal insulation, use of solar panels and thermal energy storage reduce energy usage.



UNITY AND INDIVIDUALITY

The compressed sediment brick is smooth, but many individual creations are possible by using molds with different sizes and with a varying roughness in surface. Buyers can express their individuality this way while maintaining the unity of a uniform façade by using the same materials.

VARIATIONS AND COMBINATIONS

The façades are comprised of prefabricated elements and are finished with the sediment bricks of NETICS. Door and window openings can be designed by the client. There is a wide selection of possibilities: windows and doors, panels with blinds, loggias, French balconies, green façades and kitchen gardens. The client chooses his own detailed layout of the house. In short, we offer an optimal freedom of choice for the self-conscious consumer.



Wilgenbos 20
3311 JX Dordrecht
PO box 298
3300 AG Dordrecht
+31 78 633 06 60

info@egm.nl
www.egm.nl
@egmarchitecten



BUYERS CHOOSE, BUT WE ARE ONSTANDBY

Buyers want to be in control during the decision making process. That's why they are involved in the design process early on. EGM architecten offers a team of professionals to help them making the optimal decision.



ORDINARY YET EXTRAORDINARY

The living concept is functional and is distinctive through architecture inspired by the Amsterdam School. It is both modern and traditional by the use of the applied building method. It offers possibilities for unity and individuality. Moreover, this new living concept is flexible and sustainable.

Focused on the future. Are you curious about the possibilities? We would like to share thoughts with you:
hans.van.pelt@egm.nl or +31 78 633 06 51

SEDIMENT

BENEFITS FOR THE CLIENT

- Unique
- Free choice brick shape
- Free choice façade layout
- Flexibility
- Energy efficient
- Environmentally friendly
- Sustainable
- Contribution to water management

SMART AND SWIFT CONSTRUCTION

The 'house made out of sediment' façade gets constructed in a short timespan through use of a clever and modular element building system.



ENVIRONMENTALLY CONSCIOUS

The façade elements are movable by truck or container which enables efficient transportation.



COST-EFFECTIVE

The façade elements are mass-produced.



FLEXIBILITY

The façade element is suitable for any building layout imaginable. The panels are interchangeable.



RESIDENTS



Who lives behind this façade? Clients are free to choose their design; they can choose their own unique combination of panels. The options vary from closed sections,

windows and doors, panels with blinds, loggias, French balconies, green façades to even a vertical kitchen garden. The possibilities are endless. The panels get placed in a 600 mm grid. These façades offer a unique dream home for every client.



SUSTAINABLE BUILDING



Four façades, floors and a roof form a sustainable shell around the volume.

SUSTAINABLE ROOF

Green roofs are biological and in addition can be used to buffer water. They also offer an opportunity to generate electricity.



SUSTAINABLE WALL

High quality insulated façades, a skin of rock, compressed from local sediment, invisible solar cells in triple glass, integrated blinds through transparent masonry.

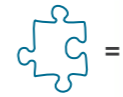


SUSTAINABLE FOUNDATION

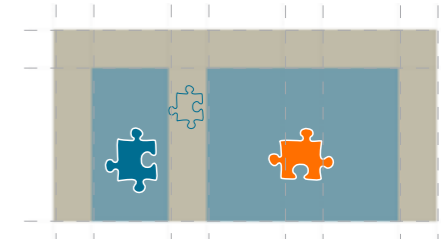
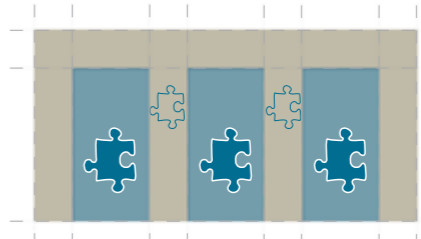


Individual thermal storage underneath the building.

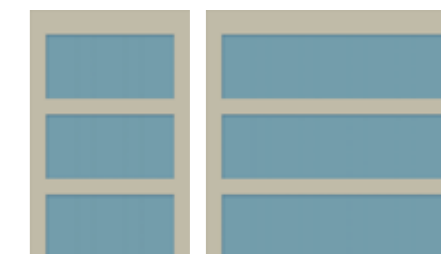
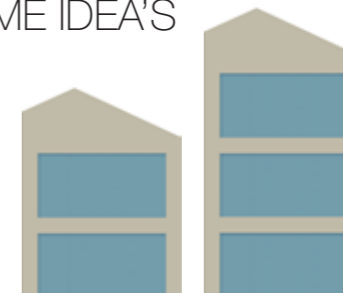
PANEL COLLECTION



FAÇADE GRID



HOME IDEA'S



SEDIMENT

SUMMARIZING HOUSE MADE OUT OF SEDIMENT

- Client, sustainability and environment have priority
- Simple idioms, innovation and creative use of materials
- Buyer as a designer
- Free choice of collection
- Flexibility in grid
- House made out of sediment: a dream home!